

STEERING LOCK  
 BELL 2X 8mm HOLES 6mm DEEP  
 ON 6mm CENTRES

ROLLER BEARING HEND STERT - V50  
 - V65 HEND STERT PROBABLY IS OK  
 - 15mm LONGER THAN V50.

M25 x 1  
 MAX OD 0.981"  
 TO PREVENT INTERFERENCE.

BASE  $\phi$  27mm  
 $\phi$  1.283"  
 $\phi$  53mm  
 $\phi$  TO SORT BEARING  
 APPROX 47mm  
 2 OFF REQ'D.

USE BEARING

# 32005 XA

(8/14 ABC, OCT '97)

BEARING OUTER RING

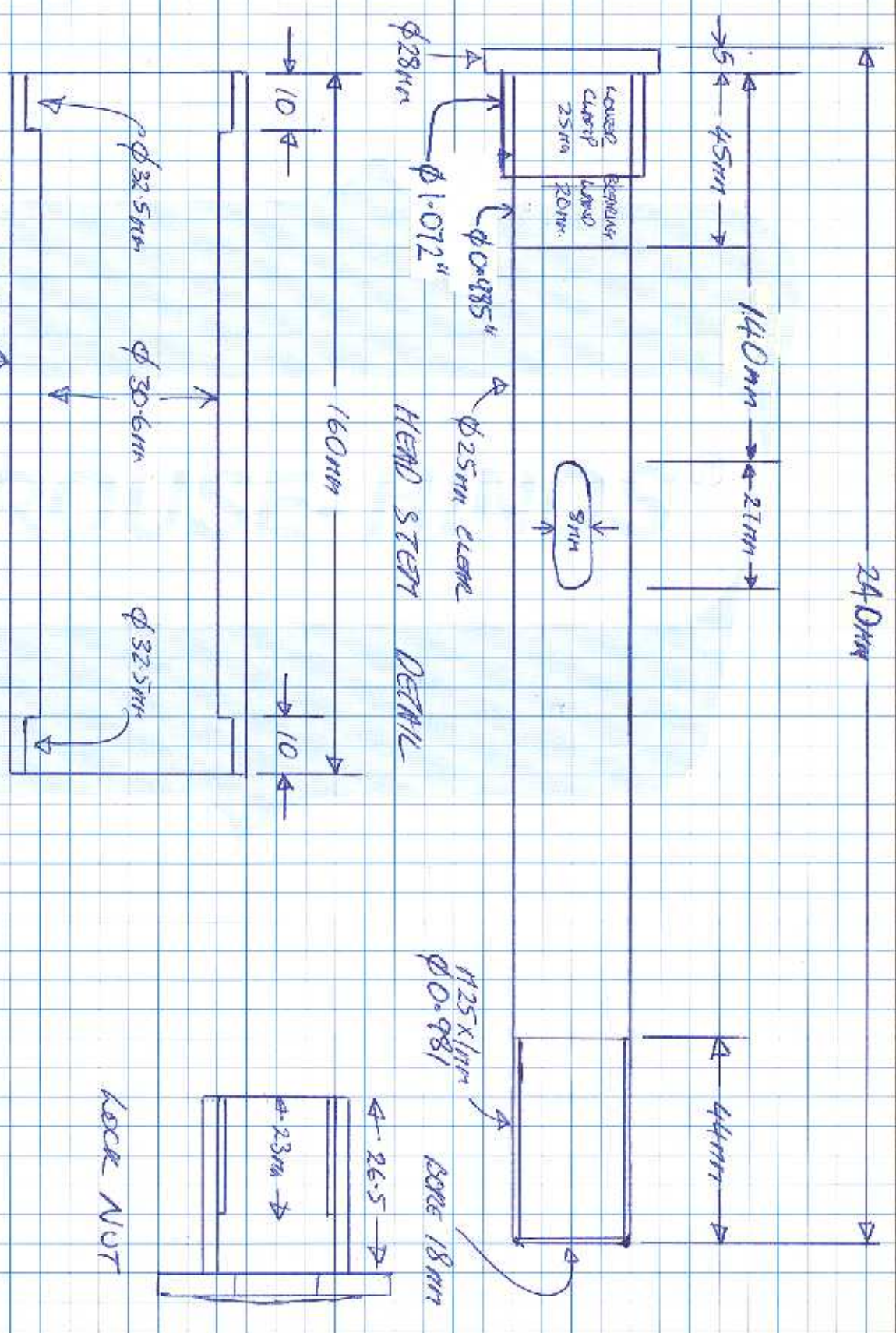
CHAMFER ALL CORNERS 45° X 1.5mm.

V50 ROLLER BEARING CONVERSION



Australian Manufacturers  
 of Hazardous Area  
 Electrical Equipment  
 for Industry and Mining





NOTE - AWELDED AFTER MACHINING, SOME INSPECTION - BENDING, RECESSED PART DRAWING.

HEAD STOCK DETAIL

HEAD STEM DETAIL

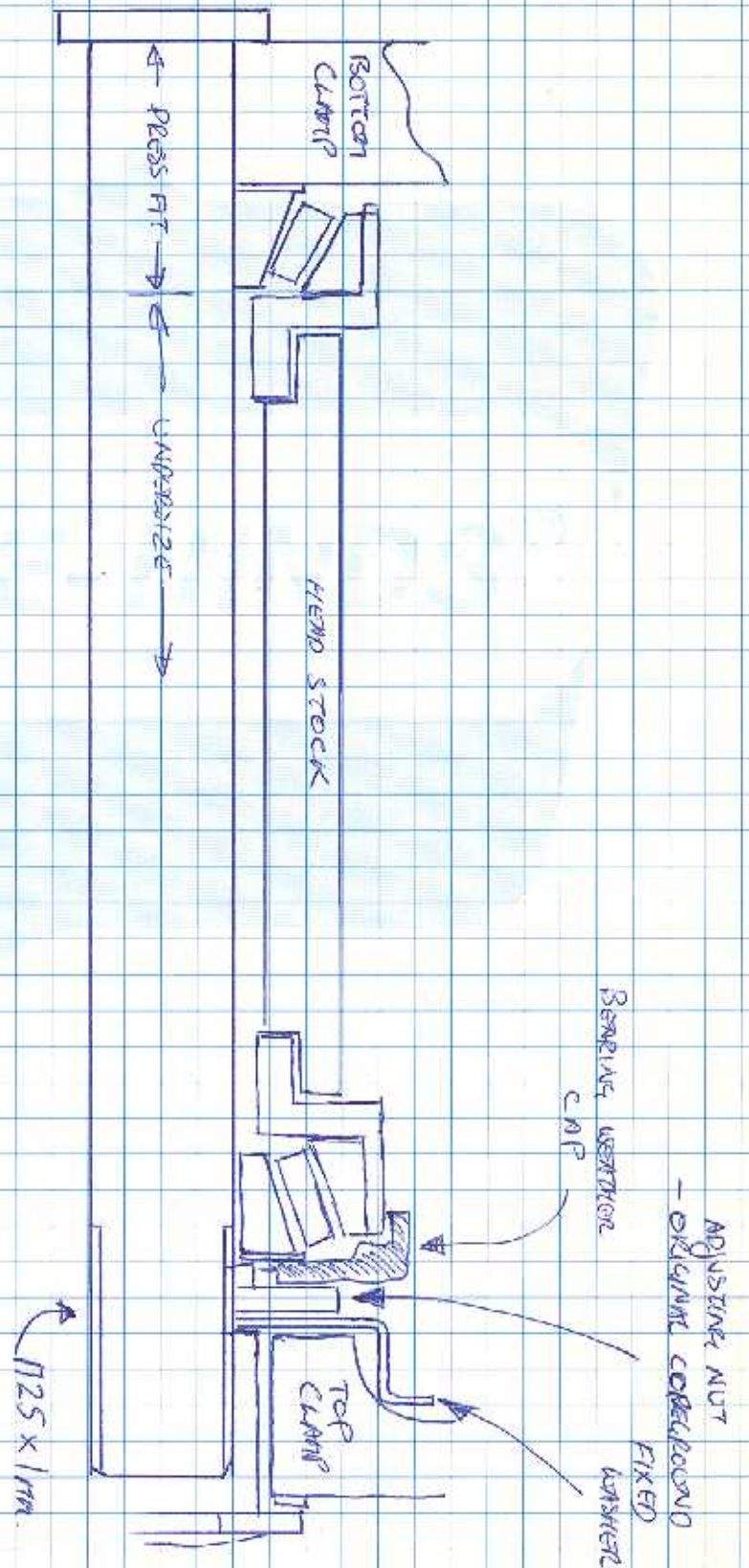
V50 - STANDARD HEAD STOCK + STEM

NOT TO SCALE



Australian Manufacturers of Hazardous Area Electrical Equipment for Industry and Mining





V50 ROLLER BEARING STEERING HEAD  
- ASSEMBLY.



Australian Manufacturers  
of Hazardous Area  
Electrical Equipment  
for Industry and Mining