



SERVICE NOTE NUMBER 003-2008

11/03/2008

TOPIC: Recall campaign

SUBJECT: Griso 8V-1200 and Stelvio 1200 timing nut service

Dear Dealer,

we found that on the above referenced vehicles the nut retaining the crankshaft timing gear works itself loose leading to a displacement of timing gear and sprocket. This may cause the engine lubrication system to malfunction.

The nut works itself loose due to the washer placed between nut and gear. The problem is solved by replacing the current washer with a taper washer.

Please contact your Customers without delay and make the necessary arrangements to have the part replaced.

Replacement of this washer is also **mandatory** on the motorcycles in your stock before they are sold and delivered to your Customers.

As a matter of fact, we are in the process of putting all vehicles delivered to date on hold in the **SOM** system. When a sales declaration is entered, the system will open a window that prevents Customer data registration with a reminder that vehicle sales have been put on hold.

Affected vehicles are Griso 8V and Stelvio 1200 included in the following VIN ranges:

VEHICLE	From VIN no.	To VIN no.
GRISO 8V	ZGULSE00#7M111112	ZGULSE00#8M111705
STELVIO 1200	ZGULZ000#7M111117	ZGULZ000#8M111315



WARNING: Replacement is **NOT** required on all motorcycles included in the ranges indicated above, as some vehicles have already undergone corrective action at Moto Guzzi. Please adhere to the list of VIN numbers attached to this Service Note.

MOTO GUZZI WILL NOT REFUND ANY REPAIR WORK ON VEHICLES NOT INCLUDED IN THE ATTACHED LIST.

The procedure is outlined below. The pictures illustrate the procedure performed on a Stelvio 1200, as it is more complex. For Griso 8V vehicles, do not forget that tank removal requires the prior removal of conveyors and exhaust manifolds to gain access to the timing cover.

PROCEDURE:

- Remove the seat and disconnect the battery
- Remove the tank cover (6 screws, **fig. 1**)



Fig. 1

- Remove the tank filler plug (4 screws, **fig. 2**)



Fig. 2

- Remove the tank filler plug cover. Unscrew the 11 retaining screws and withdraw the breather hoses during removal (**fig. 3, 4 and 5**)



Fig. 3



Fig. 4



Fig. 5

- Remove the retaining screws of the side fairings shown in the next pictures to allow removal of the tank (8 screws, **fig. 6, 7 and 8**)

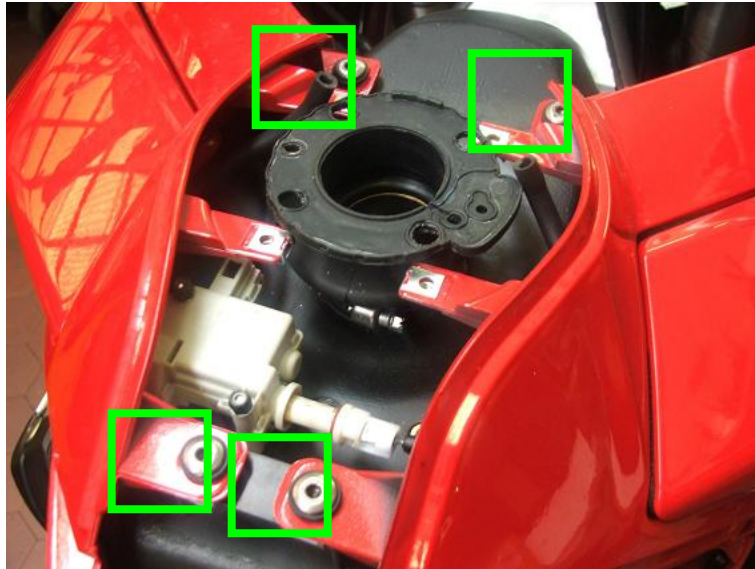


Fig. 6

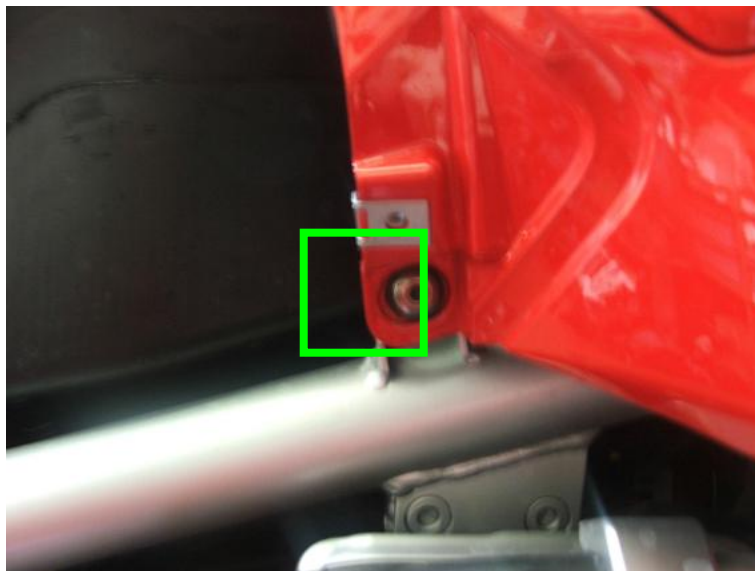


Fig. 7



Fig. 8

- Withdraw the breather hoses connected to the tank and disconnect the actuating cable of the glove compartment lock. Remove the black pin from its seat (**fig. 9**) and then disconnect the white pin keeping it pressed against the glove compartment lock (**fig. 10**). Disconnect the connector



Fig. 9



Fig. 10

- Remove the 4 retaining screws, disconnect the electric connector and the fuel pump quick fitting and then push apart the side fairings you had released previously to remove the tank (**fig. 11**)



Fig. 11

- Remove the lower fairing cowl
- Remove the radiator and cover the front mudguard to protect it from damage



- Remove alternator and alternator belt (**fig. 12**)



Fig. 12

- Remove the alternator pulley nut. To this end, lock out rotation of the clutch gearwheel using a screwdriver. Fit the screwdriver through the suitable hole in the gearbox casing; the hole and its rubber blanking cap may be accessed after removing the guard on the right side of the vehicle (**fig. 13**)



Fig. 13



- Remove the alternator pulley using the extractor as shown in the picture (**fig. 14**)



Fig. 14

- Support the engine using a trolley and unscrew the screws that retain the timing cover to the frame to remove the cover (**fig. 15**)



Fig. 15

- Remove the retaining nut of the crankshaft timing gear and replace the flat washer with the taper washer.



- **FIT THE WASHER WITH THE TAPER (CONCAVE) SIDE FACING OUT.**

TIGHTEN TO 200 Nm, DO NOT USE LOCTITE. To this end, lock out rotation of the clutch gearwheel as for removal of the alternator pulley nut (see above)

PLEASE NOTE: THERE IS NO NEED TO REPLACE THE RETAINING NUT (fig. 16)



Fig. 16

The taper washer will be sent to your address at Moto Guzzi's charge with the next mail delivery

To reassemble, reverse the removal procedure

You will be granted 120 minutes labour time. To enter the service in GGP, register the corresponding campaign coupon in section "Enter Campaign Serv." of the Campaign menu and fill out all required fields.

For LEGAL reasons, after carrying out this intervention, it is **COMPULSORY** to register the Campaign in GGP.

Best regards

Moto Guzzi S.p.A.

Technical Support

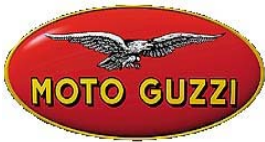


List of Griso 1200 8V VINs affected by campaign

Frame Number	Frame Number
ZGULSE0007M111149	ZGULSE00X7M111112
ZGULSE0037M111209	ZGULSE0037M111114
ZGULSE0027M111217	ZGULSE0077M111116
ZGULSE0067M111222	ZGULSE0007M111118
ZGULSE0057M111308	ZGULSE0027M111122
ZGULSE0007M111412	ZGULSE0087M111125
ZGULSE0067M111415	ZGULSE00X7M111126
ZGULSE00X7M111417	ZGULSE0057M111132
ZGULSE0037M111131	ZGULSE0087M111139
ZGULSE0017M111242	ZGULSE0087M111142
ZGULSE0037M111243	ZGULSE0017M111144
ZGULSE0057M111275	ZGULSE0037M111145
ZGULSE0047M111333	ZGULSE0097M111148
ZGULSE0087M111335	ZGULSE0077M111150
ZGULSE00X7M111370	ZGULSE0037M111159
ZGULSE0037M111372	ZGULSE0007M111166
ZGULSE0008M111587	ZGULSE0067M111172
ZGULSE0078M111599	ZGULSE0017M111175
ZGULSE0048M111611	ZGULSE0057M111180
ZGULSE0068M111612	ZGULSE0027M111184
ZGULSE00X8M111614	ZGULSE00X7M111188
ZGULSE0058M111651	ZGULSE0087M111190
ZGULSE0078M111652	ZGULSE0037M111193
ZGULSE0078M111697	ZGULSE0057M111194
ZGULSE0087M111223	ZGULSE0077M111195
ZGULSE0007M111264	ZGULSE0077M111200
ZGULSE0097M111439	ZGULSE0097M111201
ZGULSE0038M111650	ZGULSE0007M111202
ZGULSE0008M111654	ZGULSE0047M111204
ZGULSE0017M111127	ZGULSE0067M111205
ZGULSE0037M111128	ZGULSE0087M111206
ZGULSE0027M111136	ZGULSE00X7M111207
ZGULSE0047M111137	ZGULSE0017M111208
ZGULSE0047M111140	ZGULSE00X7M111210
ZGULSE0067M111141	ZGULSE0097M111215
ZGULSE0097M111151	ZGULSE0027M111220
ZGULSE0047M111154	ZGULSE0017M111225
ZGULSE0017M111161	ZGULSE0037M111226
ZGULSE0037M111162	ZGULSE0077M111228
ZGULSE0057M111163	ZGULSE0057M111230
ZGULSE0097M111165	ZGULSE0097M111232
ZGULSE0027M111167	ZGULSE0007M111233
ZGULSE0047M111168	ZGULSE0027M111234



ZGULSE0027M111170	ZGULSE0047M111235
ZGULSE0047M111171	ZGULSE0067M111236
ZGULSE0087M111173	ZGULSE0087M111237
ZGULSE0037M111176	ZGULSE00X7M111238
ZGULSE0077M111181	ZGULSE0017M111239
ZGULSE0097M111182	ZGULSE0057M111244
ZGULSE0017M111192	ZGULSE0037M111260
ZGULSE0097M111196	ZGULSE0057M111261
ZGULSE0007M111197	ZGULSE0077M111262
ZGULSE0027M111198	ZGULSE0097M111263
ZGULSE0047M111199	ZGULSE0027M111265
ZGULSE0027M111203	ZGULSE0047M111266
ZGULSE0057M111213	ZGULSE0087M111268
ZGULSE0007M111216	ZGULSE00X7M111269
ZGULSE0067M111219	ZGULSE0037M111274
ZGULSE00X7M111224	ZGULSE0077M111276
ZGULSE0057M111227	ZGULSE0097M111277
ZGULSE0097M111229	ZGULSE0097M111280
ZGULSE0077M111231	ZGULSE0027M111282
ZGULSE0077M111245	ZGULSE0047M111283
ZGULSE0097M111246	ZGULSE0087M111285
ZGULSE0067M111270	ZGULSE0057M111289
ZGULSE0087M111271	ZGULSE0017M111290
ZGULSE0007M111278	ZGULSE0037M111291
ZGULSE0027M111279	ZGULSE0077M111293
ZGULSE0067M111298	ZGULSE0097M111294
ZGULSE0067M111303	ZGULSE0007M111295
ZGULSE0087M111304	ZGULSE0027M111296
ZGULSE0037M111307	ZGULSE0047M111297
ZGULSE0017M111340	ZGULSE0087M111299
ZGULSE0067M111348	ZGULSE0027M111301
ZGULSE0077M111357	ZGULSE0047M111302
ZGULSE0097M111361	ZGULSE0017M111306
ZGULSE0067M111365	ZGULSE0077M111309
ZGULSE00X7M111367	ZGULSE0067M111334
ZGULSE0007M111376	ZGULSE00X7M111336
ZGULSE0027M111377	ZGULSE0017M111337
ZGULSE0047M111378	ZGULSE0037M111338
ZGULSE0037M111386	ZGULSE0057M111339
ZGULSE0067M111401	ZGULSE0057M111342
ZGULSE0087M111402	ZGULSE0077M111343
ZGULSE0077M111407	ZGULSE0097M111344
ZGULSE0037M111422	ZGULSE0007M111345
ZGULSE0037M111436	ZGULSE0027M111346
ZGULSE0007M111457	ZGULSE0087M111349
ZGULSE0027M111458	ZGULSE0067M111351
ZGULSE0088M111613	ZGULSE0087M111352



ZGULSE0038M111616	ZGULSE00X7M111353
ZGULSE0058M111617	ZGULSE0017M111354
ZGULSE0058M111634	ZGULSE0037M111355
ZGULSE0028M111638	ZGULSE0057M111356
ZGULSE0057M111129	ZGULSE0097M111358
ZGULSE0017M111130	ZGULSE0007M111359
ZGULSE0007M111135	ZGULSE0077M111360
ZGULSE0087M111156	ZGULSE0007M111362
ZGULSE00X7M111157	ZGULSE0027M111363
ZGULSE00X7M111160	ZGULSE0047M111364
ZGULSE00X7M111174	ZGULSE0087M111366
ZGULSE0017M111189	ZGULSE0017M111368
ZGULSE00X7M111191	ZGULSE0037M111369
ZGULSE0087M111240	ZGULSE0017M111371
ZGULSE00X7M111272	ZGULSE0057M111373
ZGULSE0017M111273	ZGULSE0077M111374
ZGULSE0057M111292	ZGULSE0067M111379
ZGULSE0037M111341	ZGULSE0027M111380
ZGULSE0047M111347	ZGULSE0047M111381
ZGULSE0047M111350	ZGULSE00X7M111384
ZGULSE0097M111375	ZGULSE0077M111391
ZGULSE0067M111396	ZGULSE0007M111393
ZGULSE0047M111414	ZGULSE0027M111394
ZGULSE00X7M111420	ZGULSE0047M111395
ZGULSE0057M111423	ZGULSE0027M111413
ZGULSE0097M111425	ZGULSE0087M111416
ZGULSE0077M111469	ZGULSE0017M111418
ZGULSE00X8M111581	ZGULSE0037M111419
ZGULSE00X8M111628	ZGULSE0017M111421
ZGULSE0018M111582	ZGULSE0077M111424
ZGULSE0048M111589	ZGULSE0007M111426
ZGULSE0058M111701	ZGULSE0067M111432
ZGULSE0028M111705	ZGULSE0017M111435
ZGULSE0077M111133	ZGULSE0057M111437
ZGULSE0057M111146	ZGULSE0057M111440
ZGULSE0077M111147	ZGULSE0057M111521
ZGULSE0007M111152	ZGULSE0057M111535
ZGULSE0027M111153	ZGULSE0048M111575
ZGULSE0067M111155	ZGULSE0068M111576
ZGULSE0017M111158	ZGULSE0088M111577
ZGULSE0077M111164	ZGULSE0018M111579
ZGULSE0067M111169	ZGULSE0058M111603
ZGULSE0057M111177	ZGULSE0078M111604
ZGULSE0077M111178	ZGULSE0098M111605
ZGULSE0097M111179	ZGULSE0008M111606
ZGULSE0007M111183	ZGULSE0028M111607
ZGULSE0047M111185	ZGULSE0048M111608



ZGULSE0067M111186	ZGULSE0068M111609
ZGULSE0087M111187	ZGULSE0018M111615
ZGULSE0017M111211	ZGULSE0078M111618
ZGULSE0037M111212	ZGULSE0098M111619
ZGULSE0077M111214	ZGULSE0058M111620
ZGULSE0047M111218	ZGULSE0078M111621
ZGULSE0047M111221	ZGULSE0098M111622
ZGULSE0457M111442	ZGULSE0018M111629
ZGULSE0477M111443	ZGULSE0088M111630
ZGULSE0497M111444	ZGULSE00X8M111631
ZGULSE0407M111445	ZGULSE0018M111632
ZGULSE0427M111446	ZGULSE0038M111633
ZGULSE0447M111447	ZGULSE0078M111635
ZGULSE0467M111448	ZGULSE0098M111636
ZGULSE0487M111449	ZGULSE0008M111637
ZGULSE0447M111450	ZGULSE0008M111640
ZGULSE0467M111451	ZGULSE0058M111648
ZGULSE0487M111452	ZGULSE0078M111649
ZGULSE04X7M111453	ZGULSE0068M111657
ZGULSE0417M111454	ZGULSE00X8M111662
ZGULSE0437M111455	ZGULSE0417M111485
ZGULSE0457M111456	ZGULSE0097M111327
ZGULSE0447M111481	ZGULSE0007M111328
ZGULSE04X7M111484	ZGULSE0027M111329
ZGULSE0487M111502	ZGULSE0097M111330
ZGULSE0478M111623	ZGULSE0007M111331
ZGULSE0498M111624	ZGULSE0027M111332
ZGULSE0408M111625	ZGULSE0077M111472
ZGULSE0428M111626	ZGULSE0097M111473
ZGULSE0448M111627	ZGULSE0007M111474
ZGULSE0448M111644	ZGULSE0027M111475
ZGULSE0468M111645	ZGULSE0047M111476
ZGULSE0488M111646	ZGULSE0067M111477
ZGULSE04X8M111647	ZGULSE0087M111478
ZGULSE0418M111665	ZGULSE00X7M111479
ZGULSE0438M111666	ZGULSE0067M111480
ZGULSE0007M111247	ZGULSE0027M111492
ZGULSE0027M111248	ZGULSE0047M111493
ZGULSE0047M111249	ZGULSE0067M111494
ZGULSE0007M111250	ZGULSE0087M111495
ZGULSE0027M111251	ZGULSE00X7M111496
ZGULSE0047M111252	ZGULSE0017M111497
ZGULSE0067M111253	ZGULSE0037M111498
ZGULSE0087M111254	ZGULSE0057M111499
ZGULSE00X7M111255	ZGULSE0097M111523
ZGULSE0017M111256	ZGULSE0017M111547
ZGULSE0037M111257	ZGULSE0037M111548



ZGULSE0057M111258	ZGULSE0057M111549
ZGULSE0077M111259	ZGULSE0017M111550
ZGULSE0007M111281	ZGULSE0037M111551
ZGULSE0067M111284	ZGULSE0057M111552
ZGULSE00X7M111286	ZGULSE0067M111267
ZGULSE0017M111287	ZGULSE0007M111300
ZGULSE0037M111288	ZGULSE00X7M111305
ZGULSE0057M111311	ZGULSE0067M111382
ZGULSE0077M111312	ZGULSE0057M111387
ZGULSE0097M111313	ZGULSE0077M111388
ZGULSE0007M111314	ZGULSE0097M111389
ZGULSE0027M111315	ZGULSE0057M111390
ZGULSE0047M111316	ZGULSE0087M111397
ZGULSE0067M111317	ZGULSE00X7M111403
ZGULSE0087M111318	ZGULSE0017M111404
ZGULSE00X7M111319	ZGULSE0037M111405
ZGULSE0067M111320	ZGULSE0057M111406
ZGULSE0087M111321	ZGULSE0097M111411
ZGULSE00X7M111322	ZGULSE0087M111433
ZGULSE0017M111323	ZGULSE00X7M111434
ZGULSE0037M111324	ZGULSE0077M111438
ZGULSE0057M111325	ZGULSE0077M111441
ZGULSE0077M111326	ZGULSE0047M111459
ZGULSE0047M111428	ZGULSE0027M111461
ZGULSE0067M111429	ZGULSE0037M111467
ZGULSE0027M111430	ZGULSE0037M111470
ZGULSE0047M111431	ZGULSE0028M111655
ZGULSE0077M111486	ZGULSE0048M111656
ZGULSE0097M111487	ZGULSE0018M111663
ZGULSE0007M111488	ZGULSE0098M111698
ZGULSE0037M111503	ZGULSE0098M111703
ZGULSE0057M111504	ZGULSE0008M111704
ZGULSE0077M111505	ZGULSE0068M111562
ZGULSE0048M111690	ZGULSE0088M111563
ZGULSE0068M111691	ZGULSE00X8M111564
ZGULSE0088M111692	ZGULSE0018M111565
ZGULSE00X8M111693	ZGULSE0038M111566
ZGULSE0088M111580	ZGULSE0058M111567
ZGULSE0018M111596	ZGULSE0078M111568
ZGULSE0048M111558	ZGULSE0068M111593
ZGULSE0068M111559	ZGULSE00X7M111241
ZGULSE0028M111560	ZGULSE0007M111460
ZGULSE0048M111561	ZGULSE0038M111602
	ZGULSE0028M111610



List of Stelvio 1200 VINs affected by campaign

Frame Number	Frame Number
ZGULZ00048M111140	ZGULZ00078M111181
ZGULZ00078M111150	ZGULZ00068M111186
ZGULZ00028M111170	ZGULZ00088M111187
ZGULZ00018M111192	ZGULZ000X8M111188
ZGULZ00048M111204	ZGULZ00018M111189
ZGULZ00008M111233	ZGULZ00078M111200
ZGULZ00088M111237	ZGULZ00008M111202
ZGULZ00058M111244	ZGULZ00028M111203
ZGULZ00058M111258	ZGULZ00088M111206
ZGULZ00038M111307	ZGULZ000X8M111207
ZGULZ00068M111141	ZGULZ00018M111208
ZGULZ000X8M111255	ZGULZ00038M111209
ZGULZ00018M111273	ZGULZ00018M111211
ZGULZ000X8M111305	ZGULZ00038M111212
ZGULZ00018M111306	ZGULZ00058M111213
ZGULZ00007M111117	ZGULZ00078M111214
ZGULZ00088M111125	ZGULZ00098M111215
ZGULZ00038M111128	ZGULZ00008M111216
ZGULZ00018M111144	ZGULZ00028M111217
ZGULZ00098M111151	ZGULZ00048M111218
ZGULZ00008M111152	ZGULZ00068M111219
ZGULZ00028M111167	ZGULZ00028M111220
ZGULZ00028M111184	ZGULZ00048M111221
ZGULZ00098M111196	ZGULZ00068M111222
ZGULZ00008M111197	ZGULZ00088M111223
ZGULZ00028M111198	ZGULZ000X8M111224
ZGULZ00098M111201	ZGULZ00038M111226
ZGULZ00068M111205	ZGULZ00058M111227
ZGULZ00018M111225	ZGULZ00078M111228
ZGULZ00098M111229	ZGULZ00098M111232
ZGULZ00058M111230	ZGULZ00048M111235
ZGULZ00078M111231	ZGULZ00018M111239
ZGULZ00028M111234	ZGULZ00088M111240
ZGULZ00068M111236	ZGULZ000X8M111241
ZGULZ00018M111242	ZGULZ00008M111250
ZGULZ00038M111243	ZGULZ00028M111251
ZGULZ00008M111295	ZGULZ00068M111253
ZGULZ00058M111342	ZGULZ00018M111256
ZGULZ00088M111142	ZGULZ00038M111257
ZGULZ00048M111199	ZGULZ00068M111267
ZGULZ000X8M111238	ZGULZ00098M111277
ZGULZ00078M111245	ZGULZ00018M111287
ZGULZ00068M111138	ZGULZ00028M111296
ZGULZ00088M111254	ZGULZ00048M111297



ZGULZ00058M111289	ZGULZ00048M111302
ZGULZ00058M111311	ZGULZ00088M111304
ZGULZ00038M111338	ZGULZ00038M111310
ZGULZ00008M111166	ZGULZ00028M111315
ZGULZ00088M111190	ZGULZ00088M111335
ZGULZ00008M111247	ZGULZ00018M111337
ZGULZ00048M111249	ZGULZ00048M111347
ZGULZ00048M111252	ZGULZ00088M111349
ZGULZ00098M111294	ZGULZ000X8M111353
ZGULZ00028M111301	ZGULZ00018M111161
ZGULZ00078M111326	ZGULZ00048M111168
ZGULZ00028M111332	ZGULZ00078M111178
ZGULZ00058M111339	ZGULZ00098M111182
ZGULZ00008M111345	ZGULZ00038M111193
ZGULZ00048M111185	ZGULZ00038M111260
ZGULZ00058M111261	ZGULZ00028M111265
ZGULZ00078M111312	ZGULZ00088M111268
ZGULZ00098M111327	ZGULZ000X8M111269
ZGULZ00018M111340	ZGULZ00038M111274
ZGULZ00038M111341	ZGULZ00058M111275
ZGULZ00028M111122	ZGULZ00008M111281
ZGULZ00038M111145	ZGULZ00048M111283
ZGULZ00058M111146	ZGULZ00068M111284
ZGULZ00078M111147	ZGULZ00088M111285
ZGULZ00098M111148	ZGULZ000X8M111286
ZGULZ00008M111149	ZGULZ00038M111288
ZGULZ00028M111153	ZGULZ00018M111290
ZGULZ00048M111154	ZGULZ00038M111291
ZGULZ00068M111155	ZGULZ00078M111293
ZGULZ000X8M111157	ZGULZ00068M111303
ZGULZ00018M111158	ZGULZ00058M111308
ZGULZ00038M111159	ZGULZ00008M111314
ZGULZ00038M111162	ZGULZ00068M111317
ZGULZ00058M111163	ZGULZ00088M111139
ZGULZ00078M111164	ZGULZ00068M111169
ZGULZ00098M111165	ZGULZ00068M111270
ZGULZ00098M111179	ZGULZ000X8M111272
ZGULZ00058M111180	ZGULZ00068M111298